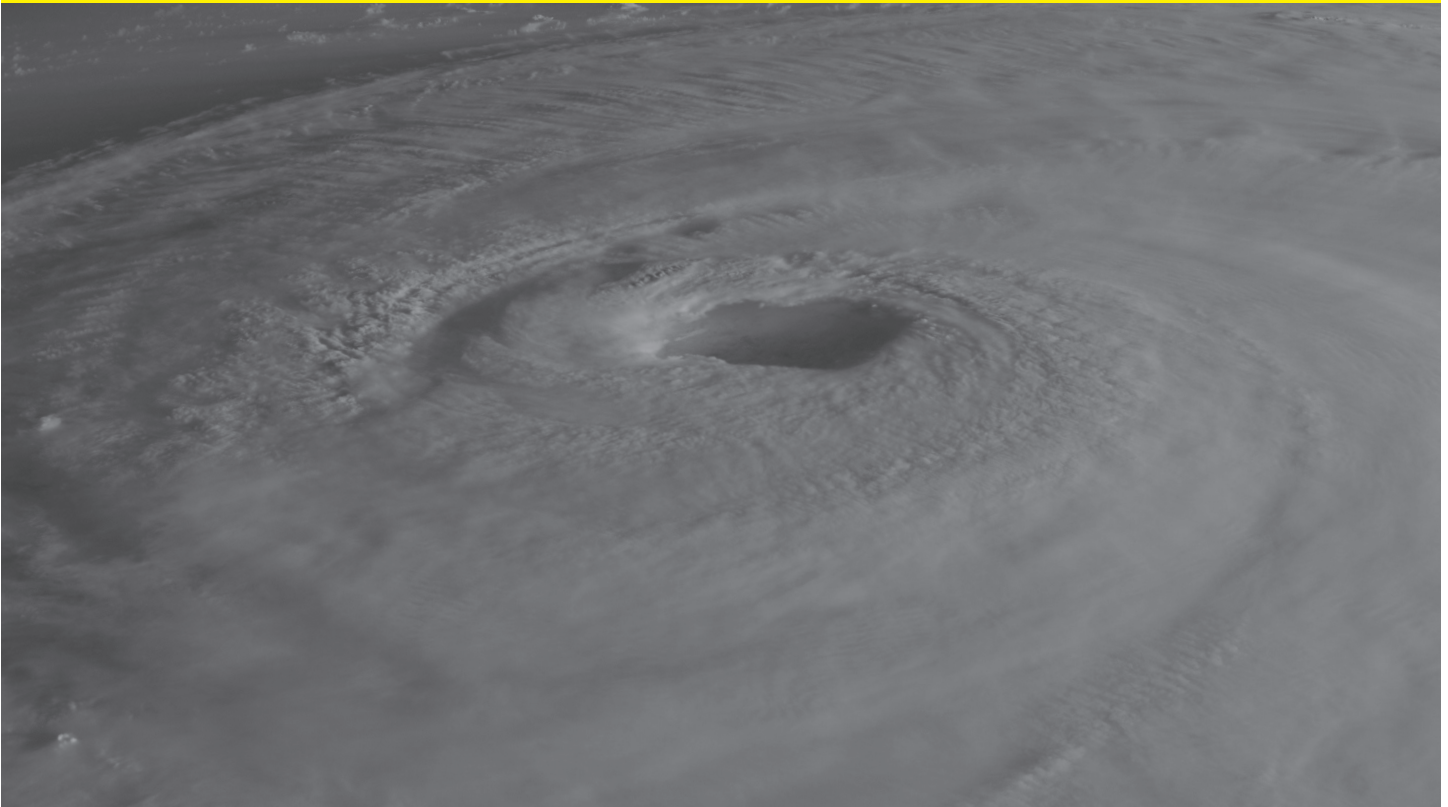


HURRICANE FABRIC

STRONGER, SAFER PROTECTION

INSTALLATION NOTES



HURRICANEFABRIC.COM

NOTES

This image shows a full page of blank white paper with horizontal ruling lines. The lines are evenly spaced and run across the width of the page, typical of notebook or legal stationery. There are no margins, text, or other markings present.

HURRICANE FABRIC

STRONGER, SAFER PROTECTION

INSTALLATION NOTES

1

The required number of Anchors and Clips for your order are calculated using nominal parameters for your application and geographic location. These parameters are; type of construction, wind pressure estimate and attachment span.

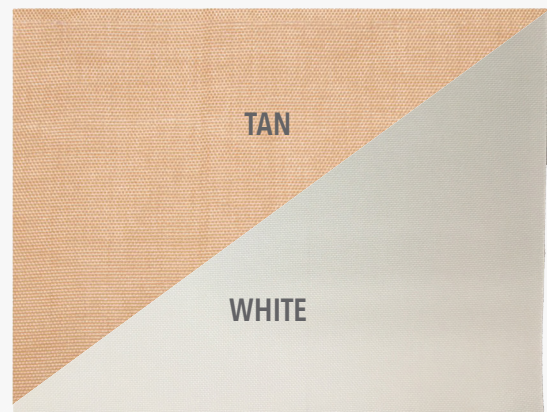


2

The vast majority of our applications use 1/4" (1/4-20) Elco Panelmate anchors (male or female) or concrete flush inserts.

3

Hurricane Fabric is designed and engineered to be attached side to side or top and bottom. Our hardware calculations assume the attachment span is the shortest of the two dimensions.



OUR PRODUCT SUPPORT STAFF IS AVAILABLE TO PROVIDE ASSISTANCE IF NEEDED.

INSTALLATION NOTES

4

Although it is not necessary to attach or anchor on 3 or 4 sides, in cases where the unattached dimension exceeds 4', it is good installation practice to use an additional anchor(s) on the non-attachment span dimension to prevent sagging or billowing.



5

Supplemental anchors should be placed mid dimension or every 24-36" on center as needed.



6

We do include some extra Clips and Anchors for this purpose, however, the installer is responsible for identifying anchor counts for his/her specific requirement.



INSTALLATION NOTES

7

Please refer to the example sketches to identify what you can expect for standard hardware definition.



8

If you desire to anchor/clip your openings differently, you must request additional hardware on your Order Form or Measurement Cut Sheet.

9

Please refer to the appropriate Product Approval Engineering documents on our website for your specific needs.



HURRICANE FABRIC

STRONGER, SAFER PROTECTION

PANELMATE PRO SINGLE UNIT PANEL GUIDE

FOR EXAMPLE 1 *3' x 5' Window Opening*

FASTENER SPACING OF A SINGLE UNIT PANEL FOR ANY LENGTH ATTACHED WITH 1/4" ELCO PANELMATE PRO, MALE & FEMALE (INCHES)

SCREEN SPAN	Filled CMU (1900 PSI)				Concrete (4000 PSI)				Hollow CMU				Timber			
	PRESSURE (PSF)				PRESSURE (PSF)				PRESSURE (PSF)				PRESSURE (PSF)			
	60	50	40	30	60	50	40	30	60	50	40	30	60	50	40	30
4' - 0	12	12	12	12	12	12	12	12	11	12	12	12	10	11	12	12
6' - 0	11	12	12	12	12	12	12	12	8	9	10	12	7	8	9	12
8' - 0	7	8	10	12	8	9	11	12	5	6	7	12	5	5	6	8
10' - 0	6	7	8	10	7	8	9	11	4	5	6	11	-	4	5	6
12' - 0	5	6	7	9	6	7	8	9	-	4	5	9	-	-	4	6
14' - 0	4	5	6	7	5	5	6	8	-	-	4	8	-	-	-	5
16' - 0	-	5	5	6	4	5	6	7	-	-	-	7	-	-	-	4
18' - 0	-	-	5	6	-	4	5	6	-	-	-	6	-	-	-	-

FOR EXAMPLE 2 *5' x 6' Window Opening*

FASTENER SPACING OF A SINGLE UNIT PANEL FOR ANY LENGTH ATTACHED WITH 1/4" ELCO PANELMATE PRO, MALE & FEMALE (INCHES)

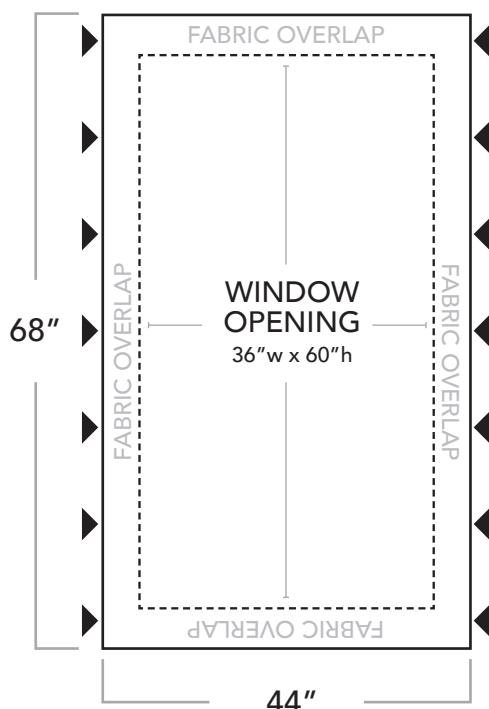
SCREEN SPAN	Filled CMU (1900 PSI)				Concrete (4000 PSI)				Hollow CMU				Timber			
	PRESSURE (PSF)				PRESSURE (PSF)				PRESSURE (PSF)				PRESSURE (PSF)			
	60	50	40	30	60	50	40	30	60	50	40	30	60	50	40	30
4' - 0	12	12	12	12	12	12	12	12	11	12	12	12	10	11	12	12
6' - 0	11	12	12	12	12	12	12	12	8	9	10	12	7	8	9	12
8' - 0	7	8	10	12	8	9	11	12	5	6	7	12	5	5	6	8
10' - 0	6	7	8	10	7	8	9	11	4	5	6	11	-	4	5	6
12' - 0	5	6	7	9	6	7	8	9	-	4	5	9	-	-	4	6
14' - 0	4	5	6	7	5	5	6	8	-	-	4	8	-	-	-	5
16' - 0	-	5	5	6	4	5	6	7	-	-	-	7	-	-	-	4
18' - 0	-	-	5	6	-	4	5	6	-	-	-	6	-	-	-	-

HURRICANE FABRIC

STRONGER, SAFER PROTECTION

TYPICAL HURRICANE FABRIC INSTALLATION

EXAMPLE 1



- 3-0/5-0 **Window**, Opening Dimension is 36"W x 60"H
- Florida Product Approval
- Filled CMU Construction.
- Panel size with 4" overlap is 44" x 68"
- Attachment span is side to side, less than 4'. Use 4' span on Engineering Chart
- Anchor type is 1/4" Elco Panelmate (male or female)
- Pressure rating is 40 P.S.F.
- Anchor spacing from the Engineering chart is 12" on center.
- 7 anchors required on each side ($68/12 = 5.66$, or 6 plus 1).
- No supplemental anchors required as non-attachment dimension is less than 4'.
- Anchors can be placed at 2", 14", 26", 38", 50", 62" and 66".
- If equidistant anchor placement is desired, place anchors 10 5/8" on center; Panel height -4"/ number of spaces between the top and bottom anchors ($68" - 4" / 6 = 10.66$ or 10 5/8")

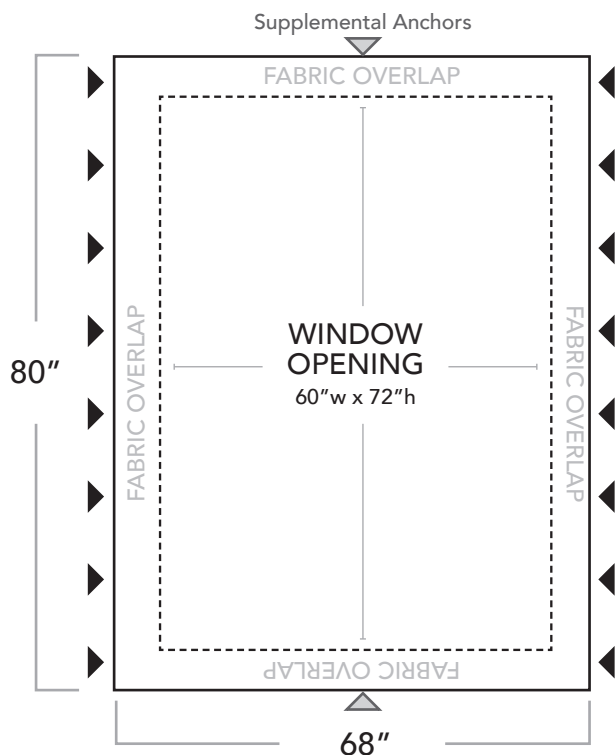
OUR PRODUCT SUPPORT STAFF IS AVAILABLE TO PROVIDE ASSISTANCE IF NEEDED.

HURRICANE FABRIC

STRONGER, SAFER PROTECTION

TYPICAL HURRICANE FABRIC INSTALLATION

EXAMPLE 2



- 5-0/6-0 **Window**, opening dimension is 60"w x 72"h.
- Florida Product Approval.
- Filled CMU Construction.
- Panel size with 4" overlap is 68"w x 80"h.
- Attachment span is side to side, 5.66'. Use 6' span on Engineering Chart.
- Anchor type is 1/4" Elco Panelmate (male or female).
- Pressure rating is 40 P.S.F.
- Anchor spacing from the Engineering chart is 12" on center.
- 8 anchors required on each side ($80/12 = 6.66$, or 7 plus 1).
- Supplemental anchors are suggested as non-attachment dimension is more than 4'.
- Place supplemental anchor at mid dimension or 34", top and bottom.
- Anchors can be placed at 2", 14", 26", 38", 50", 62", 74" and 78".
- If equidistant anchor placement is desired, place anchors 10 7/8" on center; Panel height - 4" / number of spaces between the top and bottom anchors ($80 - 4 / 7 = 10.84$ or 10 7/8").

OUR PRODUCT SUPPORT STAFF IS AVAILABLE TO PROVIDE ASSISTANCE IF NEEDED.

HURRICANE FABRIC

STRONGER, SAFER PROTECTION

PANELMATE PRO SINGLE UNIT PANEL GUIDE

FOR EXAMPLE 3 *Sliding Glass Door*

FASTENER SPACING OF A SINGLE UNIT PANEL FOR ANY LENGTH ATTACHED WITH 1/4" ELCO PANELMATE PRO, MALE & FEMALE (INCHES)

SCREEN SPAN	Filled CMU (1900 PSI)				Concrete (4000 PSI)				Hollow CMU				Timber			
	PRESSURE (PSF)				PRESSURE (PSF)				PRESSURE (PSF)				PRESSURE (PSF)			
	60	50	40	30	60	50	40	30	60	50	40	30	60	50	40	30
4' - 0	12	12	12	12	12	12	12	12	11	12	12	12	10	11	12	12
6' - 0	11	12	12	12	12	12	12	12	8	9	10	12	7	8	9	12
8' - 0	7	8	10	12	8	9	11	12	5	6	7	12	5	5	6	8
10' - 0	6	7	8	10	7	8	9	11	4	5	6	11	-	4	5	6
12' - 0	5	6	7	9	6	7	8	9	-	4	5	9	-	-	4	6
14' - 0	4	5	6	7	5	5	6	8	-	-	4	8	-	-	-	5
16' - 0	-	5	5	6	4	5	6	7	-	-	-	7	-	-	-	4
18' - 0	-	-	5	6	-	4	5	6	-	-	-	6	-	-	-	-

FOR EXAMPLE 4 *Man Door Opening*

FASTENER SPACING OF A SINGLE UNIT PANEL FOR ANY LENGTH ATTACHED WITH 1/4" ELCO PANELMATE PRO, MALE & FEMALE (INCHES)

SCREEN SPAN	Filled CMU (1900 PSI)				Concrete (4000 PSI)				Hollow CMU				Timber			
	PRESSURE (PSF)				PRESSURE (PSF)				PRESSURE (PSF)				PRESSURE (PSF)			
	60	50	40	30	60	50	40	30	60	50	40	30	60	50	40	30
4' - 0	12	12	12	12	12	12	12	12	11	12	12	12	10	11	12	12
6' - 0	11	12	12	12	12	12	12	12	8	9	10	12	7	8	9	12
8' - 0	7	8	10	12	8	9	11	12	5	6	7	12	5	5	6	8
10' - 0	6	7	8	10	7	8	9	11	4	5	6	11	-	4	5	6
12' - 0	5	6	7	9	6	7	8	9	-	4	5	9	-	-	4	6
14' - 0	4	5	6	7	5	5	6	8	-	-	4	8	-	-	-	5
16' - 0	-	5	5	6	4	5	6	7	-	-	-	7	-	-	-	4
18' - 0	-	-	5	6	-	4	5	6	-	-	-	6	-	-	-	-

HURRICANE FABRIC

STRONGER, SAFER PROTECTION

TYPICAL HURRICANE FABRIC INSTALLATION

EXAMPLE 3



- 12-0/7-0 **Sliding Glass Door**, opening dimension is 144" w x 84" h.
- Florida Product Approval.
- Filled CMU Construction.
- Panel size with 4" overlap is 152" w x 88" h.
- Attachment span is side to side, 12.66', Use 14' span on Engineering Chart.
- Anchor type is 1/4" Elco Panelmate (male or female).
- Pressure rating is 40 P.S.F.
- Anchor spacing from the Engineering chart is 6" on center.
- 15 Anchors required on each side ($88 / 6 = 14.66$ or 15). Supplemental anchors are suggested as non-attachment dimension is more than 4'.
- Anchors can be placed at 2", 8", 14", -----, 74", 80" and 86".
- In this application, equidistant anchor placement is achieved because of the height and on center dimensions.
- 6 Supplemental anchors should be placed equidistant on top ($152 - 4 / 6 = 29.6$ or $29 \frac{5}{8}$ " on center).

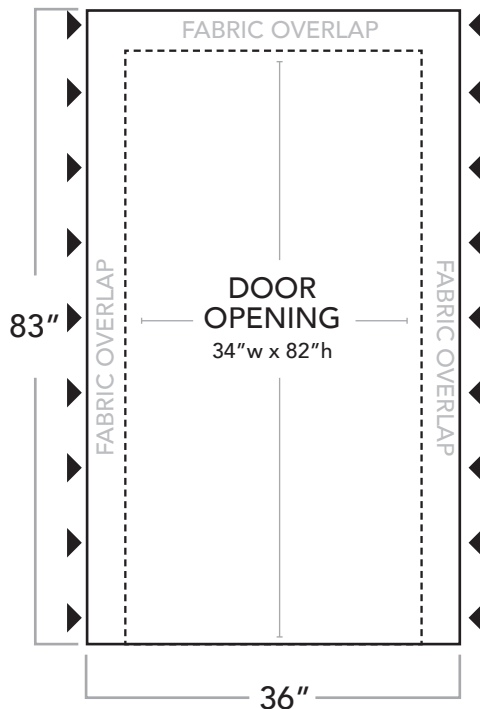
OUR PRODUCT SUPPORT STAFF IS AVAILABLE TO PROVIDE ASSISTANCE IF NEEDED.

HURRICANE FABRIC

STRONGER, SAFER PROTECTION

TYPICAL HURRICANE FABRIC INSTALLATION

EXAMPLE 4



- **Standard Man Door**, opening dimension is 34" w x 82" h.
- Florida Product Approval.
- Wood Frame (Timber) Construction.
- Panel size with 1" overlap is 36" x 83".
- Attachment span is side to side, less than 4'. Use 4' span on Engineering Chart.
- Anchor type is ¼ Elco Panelmate (male or female).
- Design pressure rating is 50 P.S.F. (HVHZ).
- Anchor spacing from the Engineering chart is 11" on center.
- 9 anchors required on each side ($83/11 = 7.54$, or 8 plus 1).
- No supplemental anchors required as non-attachment dimension is less than 4'.
- Anchors can be placed at 2", 13", 24", 35", 46", 57", 68", 79" and 81".
- If equidistant anchor placement is desired, place anchors 9 7/8" on center; Panel height -4" / number of spaces between the top & bottom anchors ($83" - 4" / 8 = 9.87"$ or 9 7/8").

OUR PRODUCT SUPPORT STAFF IS AVAILABLE TO PROVIDE ASSISTANCE IF NEEDED.

HURRICANE FABRIC

**1505 POINSETTIA DRIVE
BUILDING H SUITE 3
DELRAY BEACH, FL 33444
PHONE: 561-742-3756
FAX: 954-206-2705**

HURRICANEFABRIC.COM